

# BOAT HOUSE BULLETIN®



A Factual Report from Mercury Marine

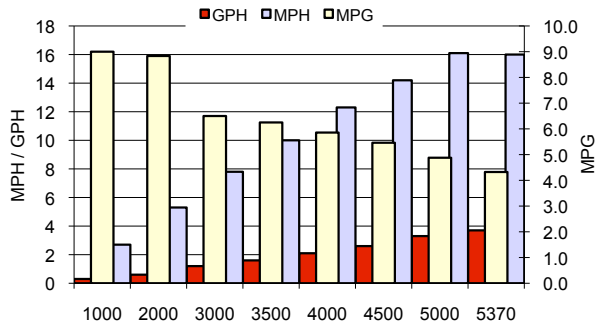
## TEST CONDITIONS

Test Date	10/17/12
Test Conductors	MS / TK
Boat Weight as Tested (pounds)	N/A
Air Temperature (degrees Fahrenheit)	60
Elevation (feet)	744
Wind Velocity (MPH)	0-5
Fresh/Salt Water	Fresh
Fuel Level at Testing (gallons)	6

## PERFORMANCE SUMMARY

Top Speed (MPH @ RPM)	16 @ 5370
Acceleration 0 - 20 MPH (Seconds)	N/A
Acceleration 0 - 30 MPH (Seconds)	N/A
Best Fuel Efficiency (MPG @ MPH)	8.8 @ 5.3

## PERFORMANCE CURVE



## PERFORMANCE DATA

RPM	SPEED	FUEL	FUEL
RANGE	MPH	GPH	MPG
1000	2.7	0.3	9.0
2000	5.3	0.6	8.8
3000	7.8	1.2	6.5
3500	10	1.6	6.3
4000	12.3	2.1	5.9
4500	14.2	2.6	5.5
5000	16.1	3.3	4.9
5370	16	3.7	4.3

## ENGINE SPECIFICATIONS

Engine	40EFI BF
Horsepower	40
Cylinders	4
Gear Ratio	2.33:1
Model Number	

## BOAT SPECIFICATIONS

### Boat LOGO

Manufacturer	Montego Bay
Website	<a href="http://www.montegobaypontoon.com">www.montegobaypontoon.com</a>
Boat Model	C8520 - DLX
Bottom Style/Paint	Pontoon
Material	Aluminum
Length	20
Beam	8'6"
Transom Height (inches)	20
Transom Angle (degrees)	14
Max HP Capacity	90
Fuel Tank Capacity (gallons)	22 optional
Steering Type	NFB
Dry Boat Weight (pounds)	1750
Mounting Bolt Hole (outboard)	#1

## PROPELLER SPECIFICATIONS

Part Number (RightHand)	8M8026555
Part Number (Left Hand)	
Mercury Name	SpitFire
Material	Aluminum
Diameter/Pitch	13.8 X 10
Number of Blades	4
<b>M/C Bravo Three Propeller</b>	
Part Number (Forward)	
Part Number (Rear)	

MERCURY MARINE PO BOX 1939 FOND DU LAC, WISCONSIN 54936-1939

©2012 Mercury Marine, All Rights Reserved. Results on individual boats may vary depending on many factors, including weather and the condition of propeller, lower unit and boat bottom. Boat information based on manufacturer's published specifications.

800-MERCURY MERCURYMARINE.COI