

BOAT HOUSE BULLETIN®



A Factual Report from Mercury Marine

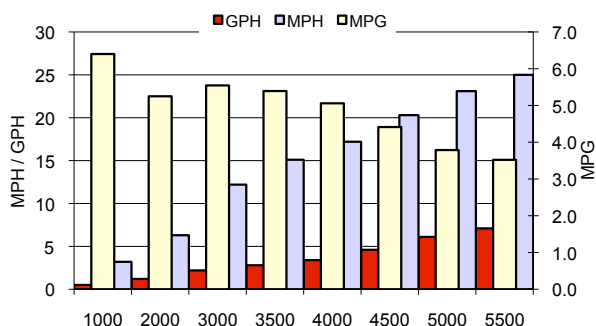
TEST CONDITIONS

Test Date	10/17/12
Test Conductors	MS / TK
Boat Weight as Tested (pounds)	N/A
Air Temperature (degrees Fahrenheit)	60
Elevation (feet)	744
Wind Velocity (MPH)	0-5
Fresh/Salt Water	Fresh
Fuel Level at Testing (gallons)	6

PERFORMANCE SUMMARY

Top Speed (MPH @ RPM)	29.5 @ 6330
Acceleration 0 - 20 MPH (Seconds)	6.4
Acceleration 0 - 30 MPH (Seconds)	N/A
Best Fuel Efficiency (MPG @ MPH)	

PERFORMANCE CURVE



PERFORMANCE DATA

RPM	SPEED	FUEL	FUEL
RANGE	MPH	GPH	MPG
1000	3.2	0.5	6.4
2000	6.3	1.2	5.3
3000	12.2	2.2	5.5
3500	15.1	2.8	5.4
4000	17.2	3.4	5.1
4500	20.3	4.6	4.4
5000	23.1	6.1	3.8
5500	25	7.1	3.5
6000	28.4	9.8	2.9
6330	29.5	10.8	2.7

ENGINE SPECIFICATIONS

Engine	115EFI FourStroke
Horsepower	115
Cylinders	4
Gear Ratio	2.33:1
Model Number	

BOAT SPECIFICATIONS

Boat LOGO

Manufacturer	Montego Bay
Website	www.montegobaypontoon.com
Boat Model	F8522-4pt
Bottom Style/Paint	Pontoon
Material	Aluminum
Length	22
Beam	8'6"
Transom Height (inches)	20
Transom Angle (degrees)	14
Max HP Capacity	115
Fuel Tank Capacity (gallons)	22 optional
Steering Type	NFB
Dry Boat Weight (pounds)	1600
Mounting Bolt Hole (outboard)	#1

PROPELLER SPECIFICATIONS

Part Number (RightHand)	8M8026570
Part Number (Left Hand)	
Mercury Name	SpitFire
Material	Aluminum
Diameter/Pitch	13.8 X 13
Number of Blades	4



MERCURY MARINE PO BOX 1939 FOND DU LAC, WISCONSIN 54936-1939

©2012 Mercury Marine, All Rights Reserved. Results on individual boats may vary depending on many factors, including weather and the condition of propeller, lower unit and boat bottom. Boat information based on manufacturer's published specifications.

800-MERCURY MERCURYMARINE.COI